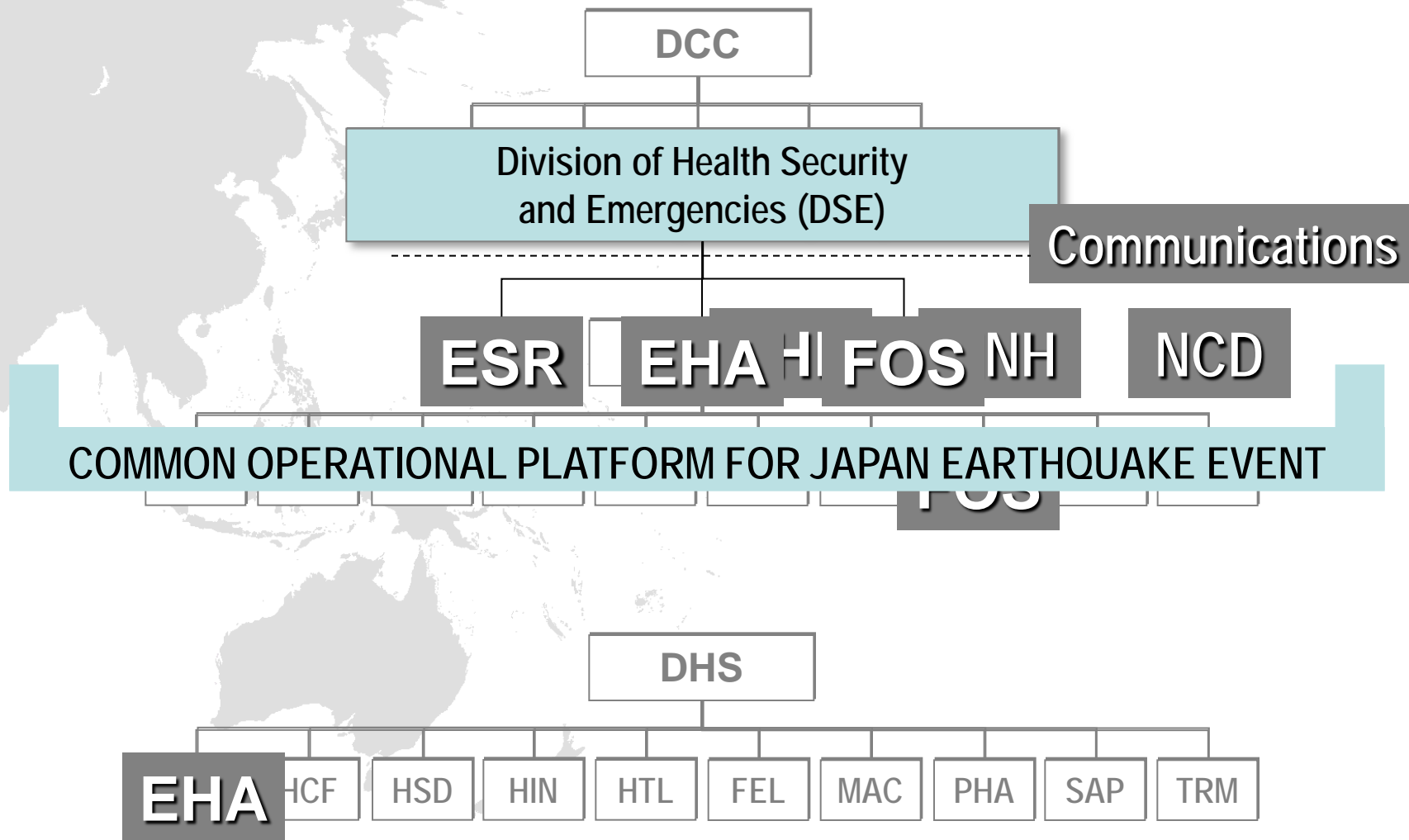


3.11 Japan Earthquake Regional Response and Country Concerns

東北大震災に対するWHOの対応

Division of Health Security and Emergencies (DSE)
Western Pacific Regional Office (WPRO)

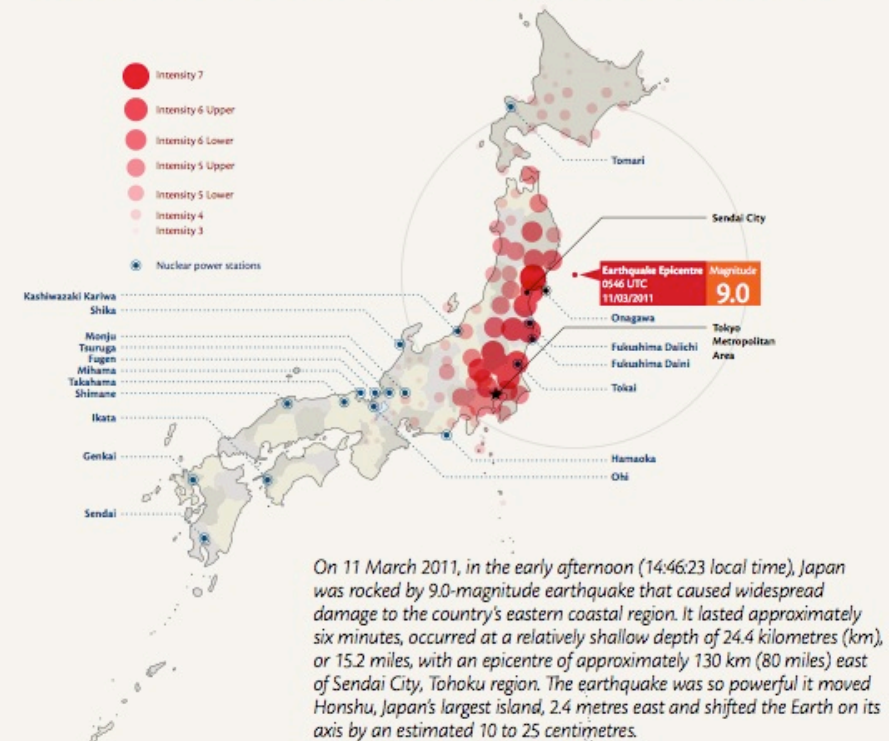
Creation of Division of Health Security and Emergencies and common operational platform



Command and control



The Great East Japan Earthquake: a disaster beyond imagination

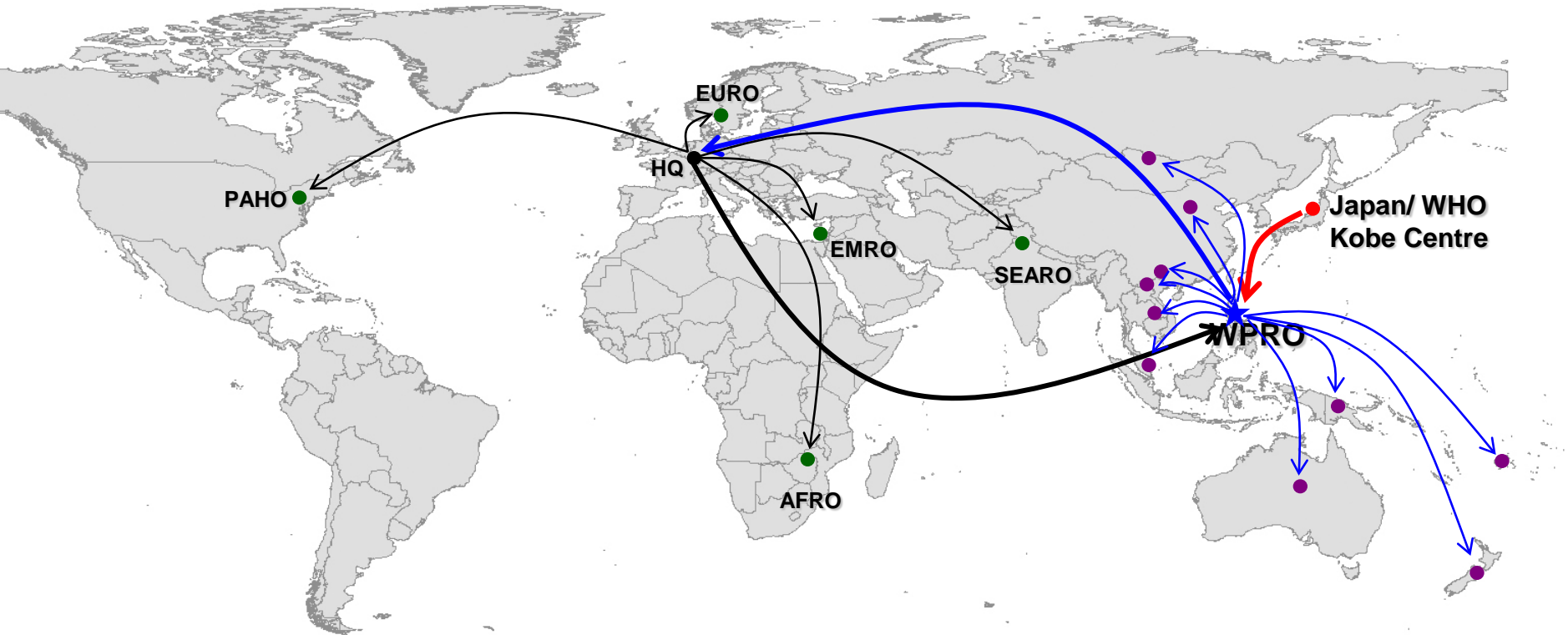


Risk Assessment to Situation Report and Guidance

- Preliminary risk assessment: to identified the size of the event
- Initial risk assessment
 - Specific to the event
 - Low temperature
 - Drowning
 - NCD
 - Infectious diseases
- Continue risk assessment
 - Infectious disease
 - NCD
 - Mental Health
- FOR Fukushima: what would be the worst case



WHO Network in 3.11 operation



IHR communication

- The Ministry of Health, Labour and Warfare notified the explosion event in Fukushima Daiichi Nuclear Power Plant through the National IHR Focal Point within a few hours after the event occurred
- WPRO immediately communicated the event to all the Member States in the region through the National IHR Focal Points



Requests from Member States and international community

- Border control measures
 - Screening of passengers
- Travel Advisory
 - Safety of travel to Japan and nearby areas
- Evacuation and precautions measures
- Other technical issue
 - Use of potassium iodide tablet

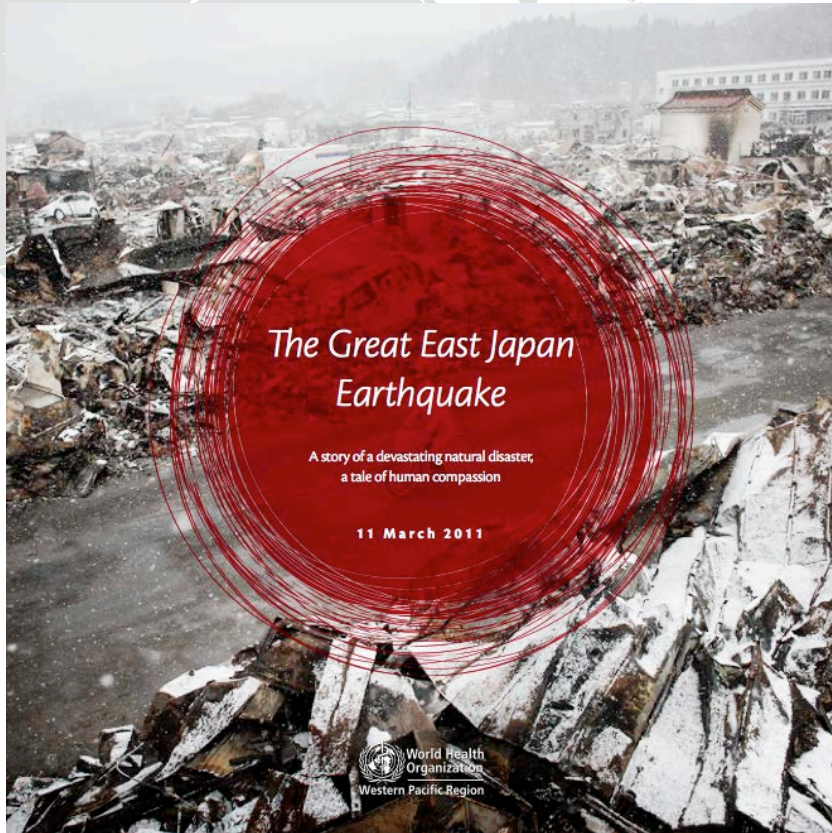


Requests from Member States

- Food Safety
 - Management of imported foods from Japan
 - Information on the likelihood of seafood contamination
 - Information on the controls put in place in Japan to prevent the sale of contaminated foods
 - Information on the Codex guideline level for radionuclides in food
 - Trade restrictions
- Sea water, air and soil



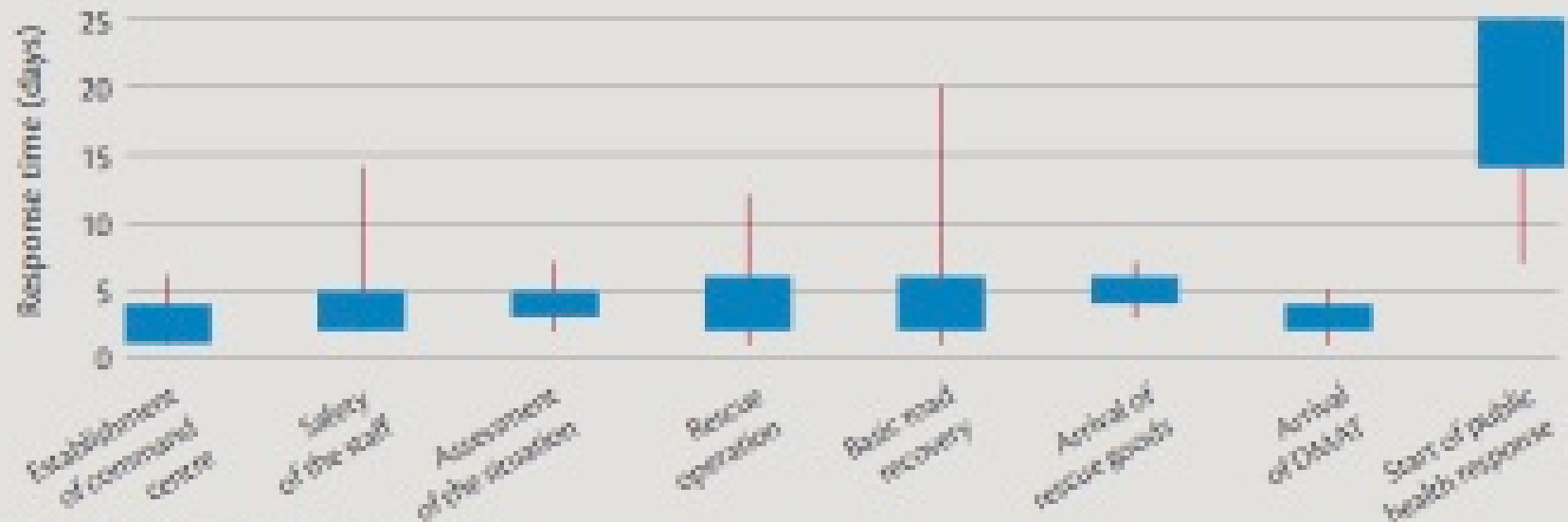
Sharing experiences



Time to response

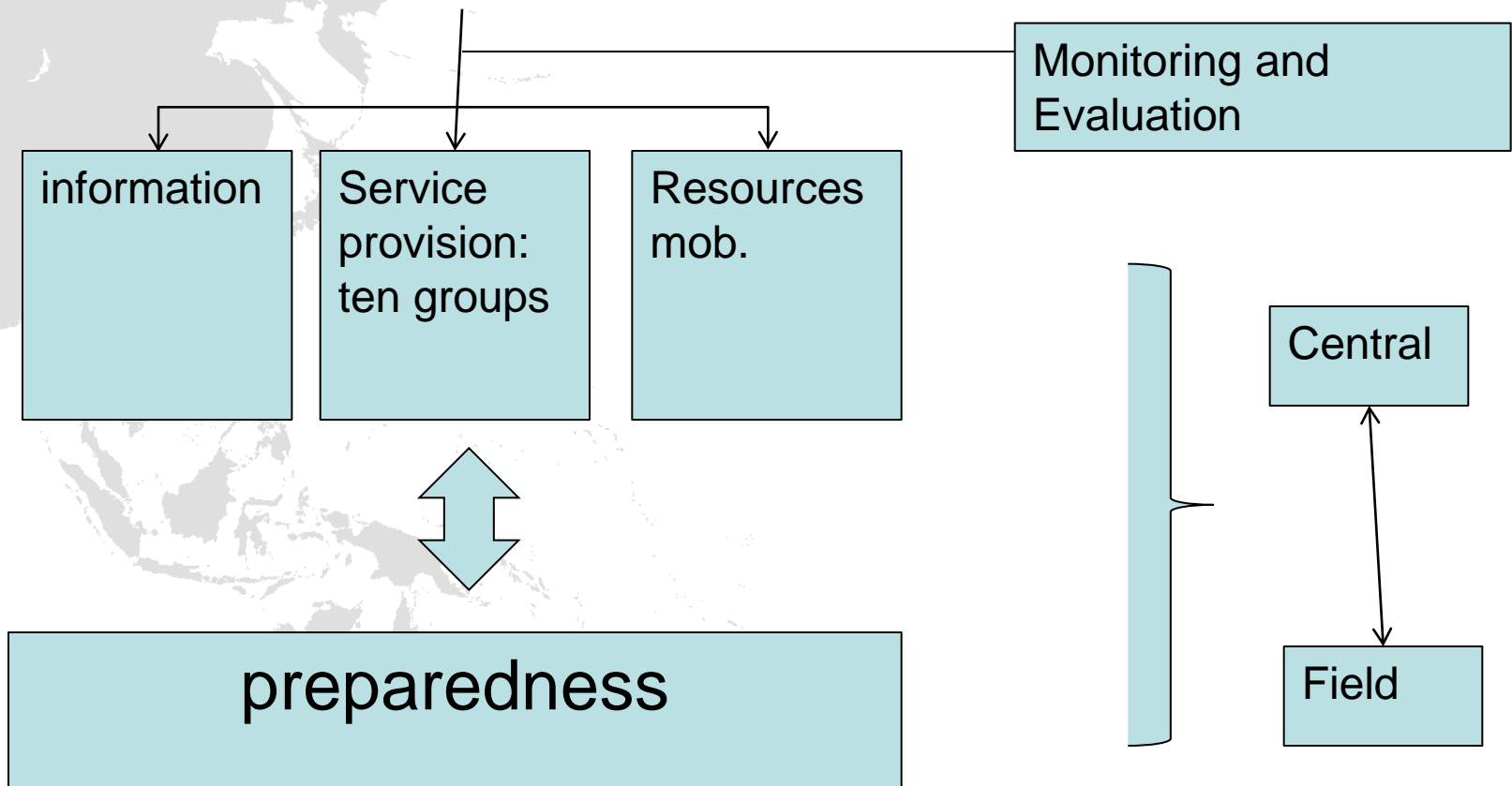
FIGURE 2.

Timeline for main response activities after the earthquake



Source: WHO Situation Report, 27 April

Health Cluster Forum and three plus one framework for response



Response to Recovery

- The event is still on-going
- WHO will continue its role in
 - monitoring the situation
 - facilitating sharing of information and lessons
 - provision of public health advice
- Provided technical support for Mental Health
- Organize meeting for Recovery (March 2013 in Morioka)

